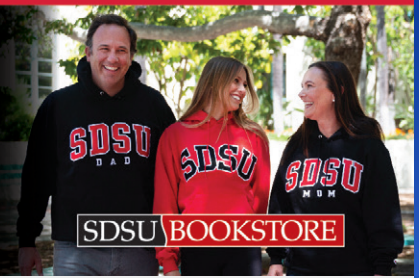


**20% OFF  
AZTEC GEAR  
APRIL 14-15  
IN-STORE ONLY**



Thank You to Our Explore SDSU 2023 Sponsors



**Keep In Touch**  
[sdsu.edu/admissions](https://sdsu.edu/admissions)

**Applicants from California**  
(619) 594-6336 • [admissions@sdsu.edu](mailto:admissions@sdsu.edu)

**Applicants from other U.S. states**  
(619) 594-3983 • [prospective@sdsu.edu](mailto:prospective@sdsu.edu)

**Applicants from other countries**  
(619) 594-1847 • [intladmission@sdsu.edu](mailto:intladmission@sdsu.edu)

**#ExploreSDSU** *Share your day!*

**Admitted Students: Submit Your Intent to Enroll Today During Explore SDSU!**

Visit the Intent to Enroll booth in front of the Prospective Student Center. Look for the **I** marker on the map.



**Tell Us What You Think**

Did you enjoy your day? How can we improve for next year? Let us know by filling out our online survey. [sdsu.edu/explorefeedback](https://sdsu.edu/explorefeedback)

# EXPLORE SDSU

**ADMITTED STUDENT DAY**

April 15, 2023, 9 a.m.–3 p.m.



**SDSU** | San Diego State University

## A Message from the President

I am thrilled to welcome you to San Diego State University! On behalf of our students, faculty, staff and nearly 500,000 alumni, congratulations on your acceptance to SDSU.



You are joining us during an exhilarating time to be an Aztec, as the university celebrates its 126<sup>th</sup> anniversary and the historic and ongoing success of our students, faculty and staff. We are a diverse, transborder university known for its scholarly excellence and culture of entrepreneurship. Our students are at the core of everything we do, and they work side by side with faculty and staff everyday to help address some of the world's greatest challenges.

I continue to be impressed by the stories of our students and alumni who discovered their passions and made their dreams come true here at SDSU. Among them are: Ellen Ochoa, astronaut and former director of the Johnson Space Center; Kathleen Kennedy, president of Lucasfilm, guardian of the "Star Wars" franchise and producer of iconic films such as "Jurassic Park"; Carl Weathers, an American actor and former professional football player; Los Angeles Clippers forward Kawhi Leonard; co-founder and former CEO of Costco Jim Sinegal; Blenders Eyewear founder Chase Fisher; County of San Diego Public Health Officer Dr. Wilma Wooten; and Destin Daniel Cretton, director of one of the most recent Marvel films, "Shang-Chi." Our students are also entrepreneurs while they are still in their classes; with over \$39M in funds raised for student start-ups through our ZIP launchpad in just the last few years.

Our exceptional students are making extraordinary impacts in the world—but not just in their careers after graduation. For example, hundreds of thousands of hours are recorded each year by our students in community service, and millions of dollars have been generated by our students' start-up businesses while they are still enrolled here at SDSU. The opportunities are limitless.

From the classroom to the athletic fields, and from the San Diego community to the world and beyond, SDSU's impact is on the rise. We hope you'll see yourself as part of our story. I personally look forward to hearing from you and seeing you on campus.

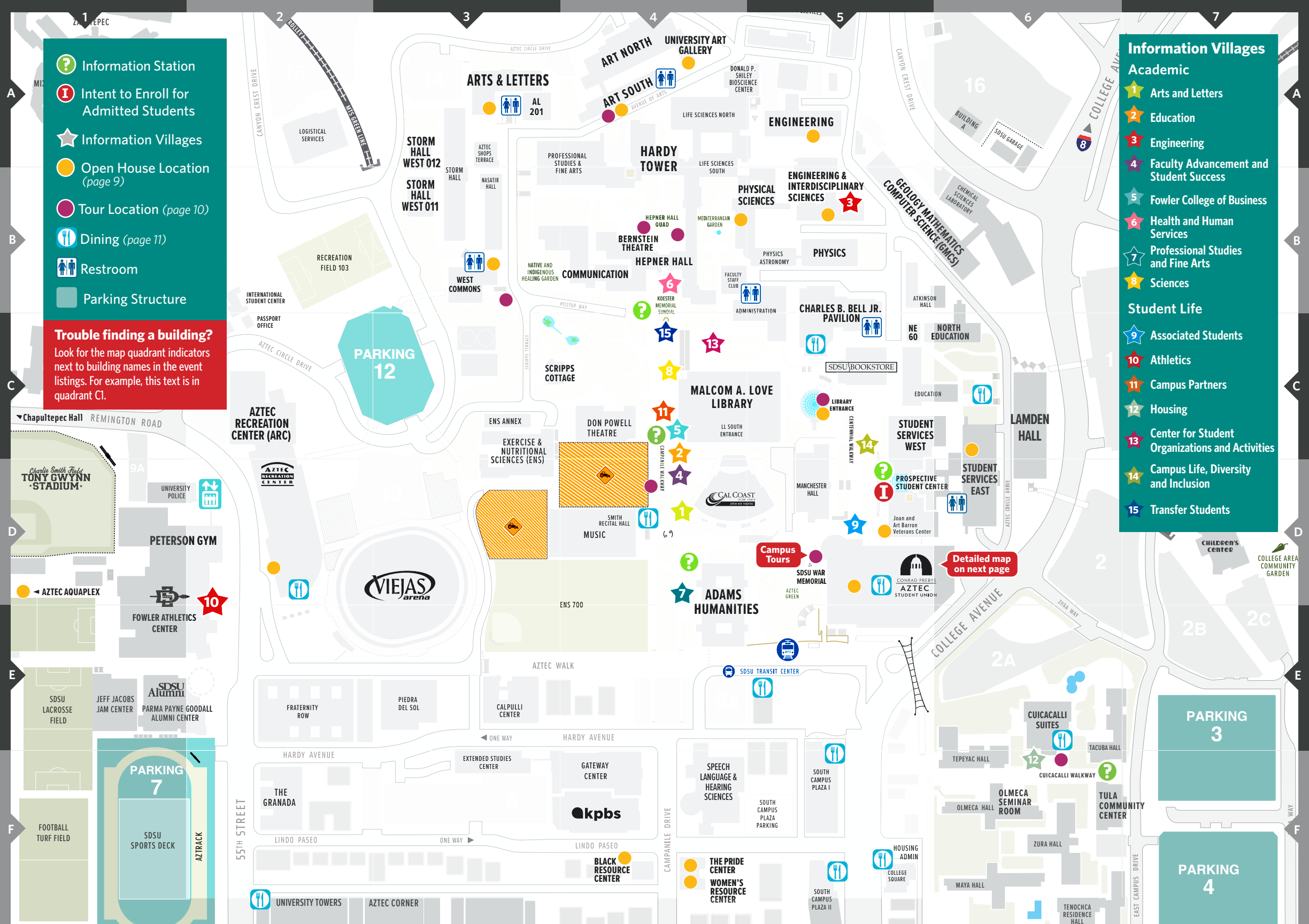
Enjoy the day!

Adela de la Torre, President, San Diego State University

- Information Station
- Intent to Enroll for Admitted Students
- Information Villages
- Open House Location (page 9)
- Tour Location (page 10)
- Dining (page 11)
- Restroom
- Parking Structure

**Trouble finding a building?**  
 Look for the map quadrant indicators next to building names in the event listings. For example, this text is in quadrant C1.

- ### Information Villages
- Academic**
    - Arts and Letters
    - Education
    - Engineering
    - Faculty Advancement and Student Success
    - Fowler College of Business
    - Health and Human Services
    - Professional Studies and Fine Arts
    - Sciences
  - Student Life**
    - Associated Students
    - Athletics
    - Campus Partners
    - Housing
    - Center for Student Organizations and Activities
    - Campus Life, Diversity and Inclusion
    - Transfer Students



**Detailed map on next page**

**Campus Tours**

Chapultepec Hall REMINGTON ROAD

Charlie Smith Field TONY GWYNN STADIUM

UNIVERSITY POLICE

PETERSON GYM

AZTEC AQUAPLEX

FOWLER ATHLETICS CENTER

SDSU Alumni

JEFF JACOBS JAM CENTER

PARMA PAYNE GOODALL ALUMNI CENTER

SDSU LACROSSE FIELD

FOOTBALL TURF FIELD

PARKING 7

SDSU SPORTS DECK

AZTEC

UNIVERSITY TOWERS

AZTEC CORNER

AZTEC RECREATION CENTER (ARC)

RECREATION FIELD 103

INTERNATIONAL STUDENT CENTER

PASSPORT OFFICE

WEST COMMONS

STORM HALL WEST 012

STORM HALL WEST 011

RECREATION FIELD 103

PARKING 12

ENS ANNEX

EXERCISE & NUTRITIONAL SCIENCES (ENS)

FRATERNITY ROW

PIEDRA DEL SOL

THE GRANADA

LINDO PASEO

UNIVERSITY TOWERS

AZTEC CORNER

ARTS & LETTERS

ART NORTH

ART SOUTH

UNIVERSITY ART GALLERY

AL 201

STORM HALL WEST 012

STORM HALL WEST 011

RECREATION FIELD 103

PARKING 12

ENS ANNEX

EXERCISE & NUTRITIONAL SCIENCES (ENS)

FRATERNITY ROW

PIEDRA DEL SOL

THE GRANADA

LINDO PASEO

UNIVERSITY TOWERS

AZTEC CORNER

ARTS & LETTERS

ART NORTH

ART SOUTH

UNIVERSITY ART GALLERY

AL 201

STORM HALL WEST 012

STORM HALL WEST 011

RECREATION FIELD 103

PARKING 12

ENS ANNEX

EXERCISE & NUTRITIONAL SCIENCES (ENS)

FRATERNITY ROW

PIEDRA DEL SOL

THE GRANADA

LINDO PASEO

UNIVERSITY TOWERS

AZTEC CORNER

ARTS & LETTERS

ART NORTH

ART SOUTH

UNIVERSITY ART GALLERY

AL 201

STORM HALL WEST 012

STORM HALL WEST 011

RECREATION FIELD 103

PARKING 12

ENS ANNEX

EXERCISE & NUTRITIONAL SCIENCES (ENS)

FRATERNITY ROW

PIEDRA DEL SOL

THE GRANADA

LINDO PASEO

UNIVERSITY TOWERS

AZTEC CORNER

ARTS & LETTERS

ART NORTH

ART SOUTH

UNIVERSITY ART GALLERY

AL 201

STORM HALL WEST 012

STORM HALL WEST 011

RECREATION FIELD 103

PARKING 12

ENS ANNEX

EXERCISE & NUTRITIONAL SCIENCES (ENS)

FRATERNITY ROW

PIEDRA DEL SOL

THE GRANADA

LINDO PASEO

UNIVERSITY TOWERS

AZTEC CORNER



## Make the Most of Your Day

### Ask Us

Our event staff around campus are wearing red shirts. You can also stop by one of the info stations across campus, indicated by the green “?” on the map.

### Map it Out

Look for the map quadrant indicators next to building names in the event listings. For example, the Prospective Student Center is in quadrant D5.

### Attend Information Sessions

Attend academic sessions (color coded by college on pages 3-8) as well as student life sessions. You can find session descriptions in the event app.

### Find Your People

Stop by the tables spread out across campus. Our amazing faculty, staff, and current SDSU students are excited to speak with you. Color-coded stars on the fold-out map indicate village locations. A full list of participants is in the event app.

### Take a Tour

We've opened our many facilities and student support and cultural centers today for you to stop by and see what makes SDSU so unique. See pages 9–10.

### Transfers: Get Connected

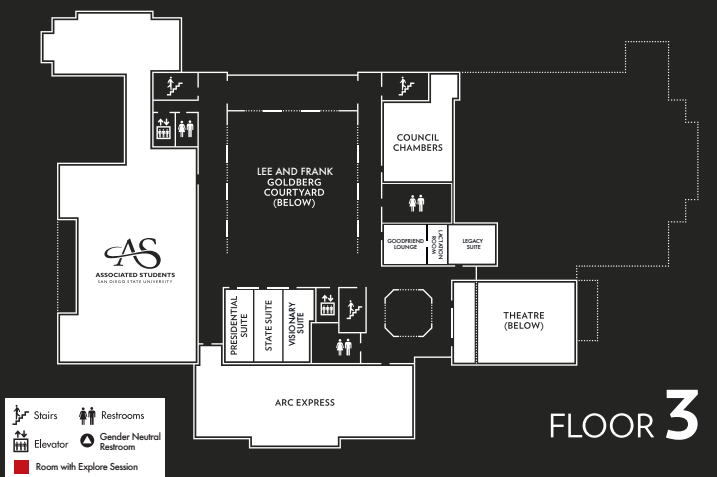
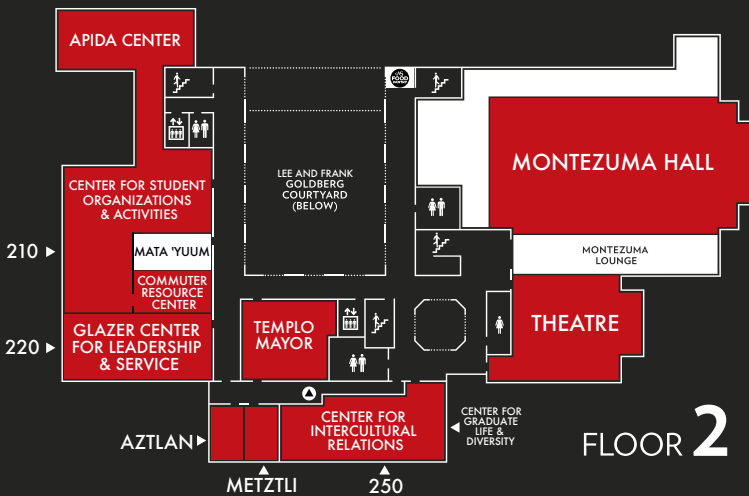
Admitted transfer students, we have an info area just for you, located in front of Hepner Hall on Campanile Walkway at the Koester Memorial Sundial. Join us at the Celebration for Transfer Students at 11 a.m. in Montezuma Hall in the Conrad Prebys Aztec Student Union, and look for information sessions specifically for transfers.

### Shop and Dine

Grab lunch at our many eateries and enjoy a great discount at the SDSU Bookstore! See locations and hours on page 11.

### Commit to SDSU Today!

If you are ready to transform your tomorrow, stop by our Intent to Enroll booth outside the Prospective Student Center in Student Services West. Our admissions staff will help you sign your Intent to Enroll to officially become a new SDSU student and you'll receive a free gift!



# Information Sessions

(See session descriptions in the event app)

## ACADEMIC INFORMATION SESSIONS BY COLLEGE

- Arts and Letters
- Education
- Engineering
- Fowler College of Business
- Health and Human Services
- Professional Studies and Fine Arts
- Sciences
- Undeclared (Division of Faculty Advancement and Student Success)

**9–9:40 a.m.** (unless otherwise noted)

## ACADEMIC SESSIONS

- Africana Studies (9:30–9:55 a.m.)** ■ West Commons 201 (B3)
- Biology and Microbiology** ■ Storm Hall West 011 (B3)
- College of Engineering** ■ Student Union, Montezuma Hall (D5)
- College of Health and Human Services** ■ Hardy Tower 140 (A4)
- Comparative and International Studies (9–9:25 a.m.)** ■ Communication 105 (B4)
- Fowler College of Business (First-Years)** ■ Arts and Letters 201 (A3)
- Pathways to K-12 Teaching** ■ Student Services East 1401 (D6)
- Psychology** ■ Storm Hall West 012 (A3)
- Science Majors (except Biology and Psychology)** ■ Geology, Mathematics, and Computer Science 333 (B5)

## STUDENT LIFE SESSIONS

- Athletics at SDSU** Fowler Athletics Center, Bob Breitbard Auditorium (E1)
- Educational Opportunity Programs (EOP)** Student Services West 1500 (D5)
- Get Involved in Fraternity and Sorority Life (9–9:25 a.m.)** Student Union, Templo Mayor (D5)
- Military and Veterans Programs and Troops to Engineers (9–9:25 a.m.)** Joan and Art Barron Veterans Center, Student Services West 1661 (D5)
- On-Campus Housing, Residential Education, and Dining** Tula Community Center (F6)
- Study Abroad and More with Global Education** Hepner Hall 130 (B4)

**10–10:40 a.m.** (unless otherwise noted)

## ACADEMIC SESSIONS

- Air Force ROTC Detachment 075 (10:30–10:55 a.m.)** ■ Communication 207 (B4)
- Anthropology (10–10:25 a.m.)** ■ Hardy Tower 022 (A4)
- College of Education** ■ Lamden Hall 343 (C6)
- Engineering: Aerospace** ■ Storm Hall West 012 (B3)
- Engineering: Civil, Construction, and Environmental** ■ Student Union, Theatre (D5)

**10–10:40 a.m. sessions continued...**

- Engineering: Electrical and Computer** ■ Geology, Mathematics, and Computer Science 333 (B5)
- Engineering: Mechanical** ■ Student Union, Montezuma Hall (D5)
- Exercise and Nutritional Sciences Panel** ■ Hardy Tower 140 (A4)
- Fowler College of Business (Transfers)** ■ Arts and Letters 201 (A3)
- Geography (10–10:25 a.m.)** ■ Communication 105 (B4)
- Hospitality and Tourism Management** ■ Student Services West 1500 (D5)
- International Business (10–10:25 a.m.)** ■ Arts and Letters 101 (A3)
- Nursing Panel** ■ Bernstein Theatre 161 (B4)
- Physics** ■ Physics 148 (B5)
- Public Health Panel** ■ Hepner Hall 130 (B4)
- School of Public Affairs: Criminal Justice, Public Administration, and City Planning (10–10:25 a.m.)** ■ Adams Humanities 4131 (E4)
- School of Theatre, Television, and Film (10–10:25 a.m.)** ■ West Commons 220 (B3)
- Social Work Panel** ■ Hepner Hall 214 (B4)
- Sociology (10–10:25 a.m.)** ■ West Commons 201 (B3)
- Speech, Language, and Hearing Sciences Panel** ■ Hepner Hall 221 (B4)
- Television, Film, and New Media (10:30–11:10 a.m.)** ■ West Commons 220 (B3)
- Undeclared Student Success Program** ■ Storm Hall West 011 (B3)

## STUDENT LIFE SESSIONS

- Associated Students: Beyond Pep Rallies (10–10:25 a.m.)** Student Union, Aztlan (D5)
- Aztec Spirit Squads: Band, Cheer, Dance, and Diamonds** Fowler Athletics Center, Bob Breitbard Auditorium (E1)
- Commuter Student Success (First-Years)** Student Union 210, Commuter Resource Center (D5)
- Getting Involved @ State** Student Union, Templo Mayor (D5)
- Global Campus: Prospective Students** Student Union, Pride Suite (D5)
- Leadership and Service Opportunities (10–10:25 a.m.)** Student Union 220, Glazer Center for Leadership and Service (D5)
- On-Campus Housing, Residential Education, and Dining (10:30–11:10 a.m.)** Tula Community Center (F6)
- Southwest Asian and North African (SWANA), Middle Eastern, and Arab Student Success (10:30–11:10 a.m.)** Student Union, Center for Intercultural Relations (D5)
- Supporting Muslim Students** Student Union, Center for Intercultural Relations (D5)
- Veteran Educational Benefits and Student Support** Student Services East 1401 (D6)
- Your Well-Being at SDSU** Student Union, Metztlí (D5)

# Information Sessions

(See session descriptions in the event app)

**11–11:40 a.m.** (unless otherwise noted)

## ACADEMIC SESSIONS

**Admitted Weber Honors College Student Panel (11–11:25 a.m.)**

Storm Hall West 012 (A3)

**Biology and Microbiology** ■ Geology, Mathematics, and Computer Science 333 (B5)

**Child and Family Development** ■ Lamden Hall 343 (C6)

**College of Arts and Letters (First-Years)** ■ Bernstein Theatre 161 (B4)

**College of Professional Studies and Fine Arts Student Panel** ■

Adams Humanities, Fourth Floor Patio (E4)

**Communication Majors and Journalism and Media Studies Majors (First-Years)** ■ Hardy Tower 140 (A4)

**Lavin Entrepreneurship Center** ■ Student Union, Aztlan (D5)

**Leadership Minor** Student Union 220, Glazer Center for Leadership and Service (D5)

**Meet the Health Professional Advising Office** ■ Storm Hall West 011 (B3)

**Theatre Arts (11:30 a.m.–12:10 p.m.)** ■ West Commons 220 (B3)

## STUDENT LIFE SESSIONS

**Black Resource Center: Henrietta Goodwin Scholars (11–11:25 a.m.)** Black Resource Center (F4)

**Celebration for Transfer Students** Student Union, Montezuma Hall (D5)

**Commuter Student Success (First-Years)** Student Union 210, Commuter Resource Center (D5)

**Eating Healthy on Campus** Student Union, Metztli (D5)

**Educational Opportunity Programs (EOP)** Student Services East 1401 (D5)

**Empowering Opportunities for Young Men of Color** Student Union, Center for Intercultural Relations (D5)

**En Español: Alojamiento en el campus, educación residencial, y comedores** Olmeca Seminar Room (F6)

**Get Involved in Fraternity and Sorority Life (11–11:25 a.m.)** Student Union, Templo Mayor (D5)

**In-State First-Years: Steps to Enroll (11–11:25 a.m.)** Arts and Letters 201 (A3)

**In-State First-Years: Steps to Enroll (11:30–11:55 a.m.)** Arts and Letters 201 (A3)

**International First-Years: Steps to Enroll** Student Services West 1560 (D5)

**Out-of-State Students: Steps to Enroll** Student Services West 1500 (D5)

**12–12:40 p.m.** (unless otherwise noted)

## ACADEMIC SESSIONS

**Admitted Weber Honors College Student Panel (12–12:25 p.m.)**

Storm Hall West 012 (A3)

**College of Arts and Letters (Transfers)** ■ Bernstein Theatre 161 (B4)

**College of Professional Studies and Fine Arts (Transfers)** ■

Adams Humanities 4131 (E4)

**Communication Majors and Journalism and Media Studies Majors (Transfers)** ■ Hardy Tower 140 (A4)

**Computer Science** ■ Hepner Hall 130 (B4)

**Engineering Diversity Initiatives: Women, Troops, and Mathematics, Engineering, Science Achievement Program (M.E.S.A.)** ■ Hardy Tower 183 (A4)

**Fowler College of Business (Transfers)** ■ Arts and Letters 201 (A3)

**International Studies Minor (12–12:25 p.m.)** ■ Hepner Hall 214 (B4)

**Liberal Studies for Elementary and Middle School Teaching** ■

Student Services East 1401 (D6)

**Physics** ■ Physics 148 (B5)

**Undeclared Student Success Program** ■ Storm Hall West 011 (B3)

## STUDENT LIFE SESSIONS

**Commuter Student Success (Transfers)** Student Union 210, Commuter Resource Center (D5)

**Compact for Success Reception** Student Union, Montezuma Hall (D5)

**DREAMer Student and Family Reception** Scripps Cottage Patio (C4)

**Getting Involved @ State** Student Union, Templo Mayor (D5)

**In-State First-Years: Steps to Enroll (12–12:25 p.m.)**

Geology, Mathematics, and Computer Science 333 (B5)

**In-State First-Years: Steps to Enroll (12:30–12:55 p.m.)**

Geology, Mathematics, and Computer Science 333 (B5)

**Leadership and Service Opportunities (12–12:25 p.m.)** Student Union 220, Glazer Center for Leadership and Service (D5)

**Military and Veterans Programs and Troops to Engineers (12–12:25 p.m.)**

Joan and Art Barron Veterans Center, Student Services West 1661 (D5)

**On-Campus Housing, Residential Education, and Dining (with ASL Interpreter)**

Tula Community Center (F6)

**Out-of-State Students: Steps to Enroll** Student Services West 1500 (D5)

**Recreation, Fitness, Outdoor Adventure, and Sports (12–12:25 p.m.)**

Student Union, Aztlan (D5)

**Transfer Students: Steps to Enroll (12–12:25 p.m.)** Student Union, Theatre (D5)

**Transfer Students: Steps to Enroll (12:30–12:55 p.m.)** Student Union, Theatre (D5)

# Information Sessions

**1–1:40 p.m.** (unless otherwise noted)

## ACADEMIC SESSIONS

**Admitted Weber Honors College Student Panel (1–1:25 p.m.)**

Storm Hall West 012 (A3)

**Air Force ROTC Detachment 075 (1–1:25 p.m.)** ■ Communication 207 (B4)

**Brazilian Studies (1–1:25 p.m.)** ■ Hardy Tower 022 (A4)

**Fowler College of Business (First-Years)** ■ Arts and Letters 201 (A3)

**Hospitality and Tourism Management Q&A (Transfers) (1–1:25 p.m.)** ■

Adams Humanities 2103 (E4)

**Integrated Teacher Education Pathways (ITEP)** ■ Student Services East 1401 (D6)

**Linguistics and Asian/Middle Eastern Languages (1–1:25 p.m.)** ■

Communication 105 (B4)

**Meet the Health Professional Advising Office** ■ Storm Hall West 011 (B3)

**Psychology** ■ Geology, Mathematics, and Computer Science 333 (B5)

**School of Theatre, Television, and Film (Transfers) (1–1:25 p.m.)** ■

West Commons 220 (B3)

## STUDENT LIFE SESSIONS

**Associated Students: Beyond Pep Rallies (1:30–1:55 p.m.)**

Student Union, Aztlan (D5)

**Day in the Life of a Transfer Student** Hardy Tower 140 (A4)

**Financial Aid and Scholarships** Student Union, Montezuma Hall (D5)

**Get Involved in Fraternity and Sorority Life (1–1:25 p.m.)**

Student Union, Templo Mayor (D5)

**Global Campus: Admitted Students** Student Union, Pride Suite (D5)

**In-State First-Years: Steps to Enroll (1–1:25 p.m.)** Student Union, Theatre (D5)

**In-State First-Years: Steps to Enroll (1:30–1:55 p.m.)** Student Union, Theatre (D5)

**On-Campus Housing, Residential Education, and Dining (1:30–2:10 p.m.)**

Tula Community Center (F6)

**Study Abroad and More with Global Education** Hepner Hall 130 (B4)

**Transfer Student Allies** Bernstein Theatre 161 (B4)

**Veteran Educational Benefits and Student Support**

Student Services West 1500 (D5)

(See session descriptions in the event app)

**2–2:40 p.m.** (unless otherwise noted)

## ACADEMIC SESSIONS

**Engineering Student Success (Transfers)** ■ Geology, Mathematics, and Computer Science 333 (B5)

## STUDENT LIFE SESSIONS

**Becoming a Resourceful Transfer Student** Hardy Tower 140 (A4)

**Financial Aid and Scholarships** Arts and Letters 201 (A3)

**Ice Cream and Chill with the Young Men of Color Alliance** Student Union, Center for Intercultural Relations (D5)

**In-State First-Years: Steps to Enroll (2–2:25 p.m.)** Student Union, Theatre (D5)

**International Transfer Students** Student Services West 1560 (D5)

**Transfer Student Mixer—Commuter Resources** Student Union, Templo Mayor (D5)

**Transfer Students: Steps to Enroll (2–2:25 p.m.)** Storm Hall West 012 (A3)



## AZTEC LANES SPECIAL BOWLING OFFER

**Free shoe rental with bowling game purchase for Explore SDSU participants.**

Friday and Saturday, 4–8 p.m., Sunday, 12–4 p.m.

Aztec Lanes, Conrad Prebys Aztec Student Union, First Floor (D5)



## MISSION BAY AQUATIC CENTER OFFER

**Free kayak or paddleboard rental for Explore SDSU participants.**

Friday–Sunday, 9 a.m.–4:30 p.m.

Visit Associated Students' instructional watersports facility.

1001 Santa Clara Place, San Diego, CA 92109

## ACADEMIC OPEN HOUSES

**College of Engineering** (11 a.m.–2 p.m.)**3D Printing Lab** Engineering 108B (A5)**Air Quality Monitoring Lab** Engineering and Interdisciplinary Sciences 006 (B5)**Antenna and Microwave Lab** Engineering and Interdisciplinary Sciences 311 (B5)**Biomedical Sensors and Wearable Devices Lab** Engineering and Interdisciplinary Sciences 322 (B5)**Experimental Mechanics Laboratory** Physical Sciences 201 (B4)**Internet of Things (IoT) Lab** Engineering 402 (A5)**Multimedia and Wireless Networks Lab** Engineering and Interdisciplinary Sciences 311 (B5)**Nanofabrication Lab** Engineering and Interdisciplinary Sciences 110 (B5)**Safe WaTER Lab** Engineering 423 (B5)**Senior Design Lab** Engineering 217 (A5)**SystemS and IntelLigEnce (SMILE) Lab** Engineering 302D (A5)**Wind Tunnel and Water Tunnel Facility** Engineering 122 (A5)**College of Professional Studies and Fine Arts****Annealing and Metal Forming for Jewelry Applications** (10 a.m.–1 p.m.)

Art North 402 (A4)

**Parallax Error: Jewelry and Editorial Photography** (9 a.m.–3 p.m.)

Art South, Lobby, Everett Gee Jackson Gallery (A4)

**Student Artwork Award Exhibition** (9 a.m.–3 p.m.) Art South, Lobby (A4)**University Art Gallery: Crossing the Line** (9 a.m.–3 p.m.) Art North 424, University Art Gallery (A4)

## STUDENT LIFE OPEN HOUSES

**Asian Pacific Islander Desi American (APIA) Center** (12–2 p.m.)

Student Union 210A (D5)

**Aquaplex** (8 a.m.–2 p.m.) Next to Tony Gwynn Stadium (off map, closest to D1)**Aztec Recreation Center (ARC)** (8 a.m.–2 p.m.) Aztec Recreation Center (C2)**Black Resource Center** (9 a.m.–2 p.m.) 5723 Lindo Paseo (D5)**Center for Intercultural Relations** (11:30 a.m.–1:30 p.m.) Student Union 220 (D5)**Commuter Resource Center and Center for Commuter Life** (9 a.m.–3 p.m.)

Student Union 210 (D5)

**Center for Student Organizations and Activities** (9 a.m.–3 p.m.) Student Union 220 (D5)**Educational Opportunity Programs, Outreach and Success** (9 a.m.–2 p.m.)

Student Services East 2109 (D6)

**Glazer Center for Leadership and Service** (9 a.m.–3 p.m.) Student Union 220 (D5)**International Admissions Office** (9 a.m.–2 p.m.) Student Services West 1641 (D5)**Joan and Art Barron Veterans Center** (9 a.m.–2 p.m.) Student Services West 1661 (D5)**Latinx Resource Center** (10 a.m.–1 p.m.) Love Library 182 (C5)**Native Resource Center** (9 a.m.–2 p.m.) West Commons 115 (B3)**Pride Center** (1–2 p.m.) 5141 Campanile Drive (F4)**University Library** (10 a.m.–3 p.m.) Enter through Library Dome (C5)**Undocumented Resource Center** (9 a.m.–2 p.m.) Arts and Letters 202 (A3)**Women's Resource Center** (1–2 p.m.) 5121 Campanile Drive (F4)**Zahn Innovation Platform (ZIP) Launchpad** (9 a.m.–3 p.m.) Engineering and Interdisciplinary Sciences 103 (B5)

## ACADEMIC TOURS

**Behind the Scenes: Studios and Galleries of Art, Design, and Art History**

Departs from: Art South, Lobby (A4)

Time: 40-minute tours departing at 10 a.m., 11 a.m., and 1 p.m.

**Nursing Skills Lab Tour**

Departs from: Hepner Hall Quad, outside Bernstein Theatre 161 (B4)

Time: 75-minute tour departing at 11 a.m.

**Public Health Lab Facilities Tour**

Departs from: Hepner Hall Quad, outside Hepner Hall 130 (B4)

Time: 40-minute tour departing at 11 a.m.

**Research and Innovation Tour**

Departs from: Research and Innovation canopy on Campanile Walkway (D4)

Time: 40-minute tours departing at 11 a.m. and 1 p.m.

**Television, Film, and New Media (TFM): Studio Tour**

Departs from: Outside West Commons 220 (B3)

Time: 25-minute tour departing at 11:30 a.m.

**Theatre Arts: Backstage Tour**

Departs from: Outside West Commons 220 (B3)

Time: 25-minute tour departing at 10:30 a.m.

**University Library Tour**

Departs from: Library Dome (C5)

Time: 25-minute tours departing continuously 10 a.m.–3 p.m.

## CAMPUS TOURS

**Black Excellence Historical Tour**

Departs from: SDSU War Memorial on Aztec Green (D5)

Time: 40-minute tours departing at 11 a.m. and 1 p.m.

**SDSU Campus Tour**

Departs from: SDSU War Memorial on Aztec Green (D5)

Time: 45-minute tours departing continuously 9 a.m.–2:30 p.m.

HOUSING TOURS *(Expect a line with a wait time based on demand)***Olmecca: First-Year Housing Tour**

Departs from: Cuicacalli Walkway (F6)

Time: 15-minute tours departing continuously 9 a.m.–3 p.m.

**Olmecca: Recorridos por las viviendas de primer año (En Español)**

Sale de: Cuicacalli Walkway (F6)

Tiempo: Recorridos de 15 minutos que salen continuamente de 9 a.m.–3 p.m.

**Tenochca: First-Year Housing Tour**

Departs from: Cuicacalli Walkway (F6)

Time: 15-minute tours departing continuously 9 a.m.–3 p.m.

**Tepeyac and Tacuba: Sophomore Housing Tour**

Departs from: Cuicacalli Walkway (F6)

Time: 15-minute tours departing continuously 9 a.m.–3 p.m.

**Zura: First-Year Housing Tour**

Departs from: Cuicacalli Walkway (F6)

Time: 15-minute tours departing continuously 9 a.m.–3 p.m.

# Shopping and Dining

## SHOPPING

**SDSU Bookstore (C5)** 9 a.m.–3 p.m.

## DINING

**Aztec Recreation Center (ARC) (C2)** **Shake Smart** 9 a.m.–8 p.m.

**Charles B. Bell Jr. Pavilion (formerly East Commons) (C5)** **Aztec Market** 8 a.m.–4 p.m.  
**Panda Express** 10 a.m.–2 p.m.  
**Rubio's** 8 a.m.–2 p.m.  
**Subway** 8 a.m.–3 p.m.  
**The Halal Shack** 10 a.m.–2 p.m.

**Conrad Prebys Aztec Student Union (D5)** **Aztec Market** 8 a.m.–4 p.m.  
**Chipotle** 11 a.m.–8 p.m.  
**Oggi's** 12–8 p.m.  
**Shake Smart** (inside Aztec Market) 9 a.m.–3 p.m.  
**Starbucks** 6:30 a.m.–10 p.m.  
**The Habit** 10:30 a.m.–8 p.m.

**Cuicacalli Suites (E6)** **Aztec Market** 9 a.m.–7 p.m.  
**The Garden** (serving brunch) 10 a.m.–2 p.m.

**South Campus Plaza (F5)** **Broken Yolk Café** 8 a.m.–9 p.m.  
**Epic Wings N' Things** 10:30 a.m.–10:30 p.m.  
**Eureka!** 11 a.m.–12 a.m.  
**Everbowl** 9 a.m.–9 p.m.  
**Poki One N Half** 11 a.m.–9 p.m.  
**Trader Joe's** 8 a.m.–9 p.m.  
**Which Wich** 10 a.m.–10 p.m.

**University Towers (F2)** **Aztec Market** 11 a.m.–7 p.m.  
**University Towers Kitchen (UTK)** (serving brunch) 11 a.m.–3 p.m.

**Other Locations** **Plant Power (Aztec Walk) (D2)** 11 a.m.–9 p.m.  
**Starbucks at College Square (F5)** 6:30 a.m.–8 p.m.

# Important Dates for Admitted Students

## MAY 1

- Intent to Enroll deadline
- Housing License Agreement deadline
- Official transcripts deadline (including fall grades)
- Official test scores deadline (if applicable)

## MAY 9

- New Student Orientation online reservation system opens at 10 a.m. PDT

## JUNE 30

- All final official transcripts and test scores must be received by the SDSU Office of Admissions (**transfer students only**)

## JULY 15

- All final official high school and/or college transcripts must be received by the SDSU Office of Admissions (**first-year students only**)

## JULY–AUGUST

- New Student Orientation

## AUGUST 17–18

- Residence halls open for move-in

## AUGUST 17–26

- Welcome Week

## AUGUST 21

- First day of fall classes

## Additional Information

### FIRST-YEAR STUDENTS

[sdsu.edu/admittedfirstyears](https://sdsu.edu/admittedfirstyears)

### TRANSFER STUDENTS

[sdsu.edu/admittedtransfers](https://sdsu.edu/admittedtransfers)